



---

## *Friends Ivanhoe Park Botanic Garden Minutes Monday 20 August 2018*

7.00 – 8.30 pm at Manly Bowling Club Raglan Street Manly NSW 2095

ATTENDANCE: 13 as per attendance sheet

1. Acknowledgement of Country (Denise Keen)
2. The Chairman Lloyd Keen recognised that the nominated council representative Jenny Cronan was present
3. Plant survey / tree identification complete. Report being compiled. We will know more about that at the next meeting when Barbara Stack from the council shares the report.
4. The Chairman welcomed and introduced the Guest Speaker David Hummerston the Infrastructure Maintenance Supervisor – Parks Operations for Northern Beaches Council recognizing that David has had a lot of experience with the Botanical Garden both with Manly Council and the Northern Beaches Council.

David talked to the meeting about the time 20 years he spent managing and supervising the Botanic Gardens. It is clear that he knows what plants are in the garden and what soil types are where and therefore what will grow best in the different areas of the garden. We are very lucky having his knowledge available for going ahead with the future plans. It will compliment what is being learned from the Survey.

5. Working in the Gardens. (Lloyd Keen) With Sandy Hudspith unable to attend the Chairman talked about the induction of members wanting to carry out gardening and clearance with in the Garden.

The outcome is that on a show of hands 11 members said they could come once a month to a working bee. As this number is below the minimum required to carry out an induction the Chairman will contact all members to see if others can be help in the Botanical Garden Meantime the Executive will discuss putting the working on the Garden off until we have more members at the next executive meeting

There was a lot of talk about how we should pursue working in the garden for the Friends of Ivanhoe Park Botanic Gardens. The last communication sent out received only 2 positive replies. It was sent out by Sandy using her address. It may be that the emails got caught up in the SPAM mail folders. All emails will be sent from the Friends of Ivanhoe Park Botanic

Gardens address and putting that address (info@friendsivanhoebotanicgarden.com) on your safe list when you receive them will help to avoid that in the future.

The reality is that with only 29 members it's going to be difficult to get a reasonable number to participate and the cost could be prohibitive unless we have those numbers. We will be approaching other groups for volunteers as well.

Where we stand today is that of the 13 members at the last meeting, 12 have agreed to the following conditions:

\* That all will do an induction on a weekend day in September/October \* All will follow the direction as presented by the Trainer on the day \* All will give 3 hours per month on a weekend day each month

We won't go ahead without a majority of members participating.

6. Website (Liz Howe) Our new website is now up and running. Liz asked for recommendations for new pages for the site and for photographs of the Garden. Please email them to info@friendsivanhoebotanicgarden.com.

And visit the site!

[www.friendsofivanhoebotanicgarden.com](http://www.friendsofivanhoebotanicgarden.com)

7. Position chart for the executive committee (Lloyd Keen) A position chart was introduced and Lloyd asked that they be kept safe and handy. The second page will be populated after volunteer induction. The chart is included in these minutes.
8. Visit to new Northern Beaches Hospital. (Lloyd Keen) Finally Denise, Lloyd and others viewed the new Hospital during the week. It was impressive. As well it dispelled a lot of rumours that have been going around. You might be interested in reading the report attached that was done by Great

#### Other Business

1. Liz Howe brought every one up to date on the Website. She asked for suggestions on other pages and suggested member should go to the webpage and experience the work carried out to date.
2. Next meeting Barbara Stack will attend and following the Surveys being completed outline the Results from the survey, A planting plan and a Plan of Management / Management Plan.
3. Discussion Took place on Fundraising lead by Tony Lewis – Some suggestions were made from the floor for follow up
4. Discussion took place on future Activities in the Gardens as well as likely sponsorship such as Brick, tree signs, seasonal plant sales. All will be followed up by Fiona Gray. Also, a meeting is being set up to ask the Councils Events Manager to include the Friends in most Mainly Events for fund Raising and membership Recruitment Purposes,
5. Likewise, further discussion on Corporate and Government Sponsorship again lead by Tony Lewis who will follow up the discussions already commenced.

The Meeting ended at 8.30 pm.

**Friends of Ivanhoe Park Botanic Garden  
Executive Committee**

**Secretary | Public Officer  
Denise Keen**

**President  
Lloyd Keen**

**Vice President  
Sandy Hudspith**

**Treasurer  
Roger Dawson**

**Minutes Secretary  
Lois Clark**

**Working Committees  
(see sheet 2)**

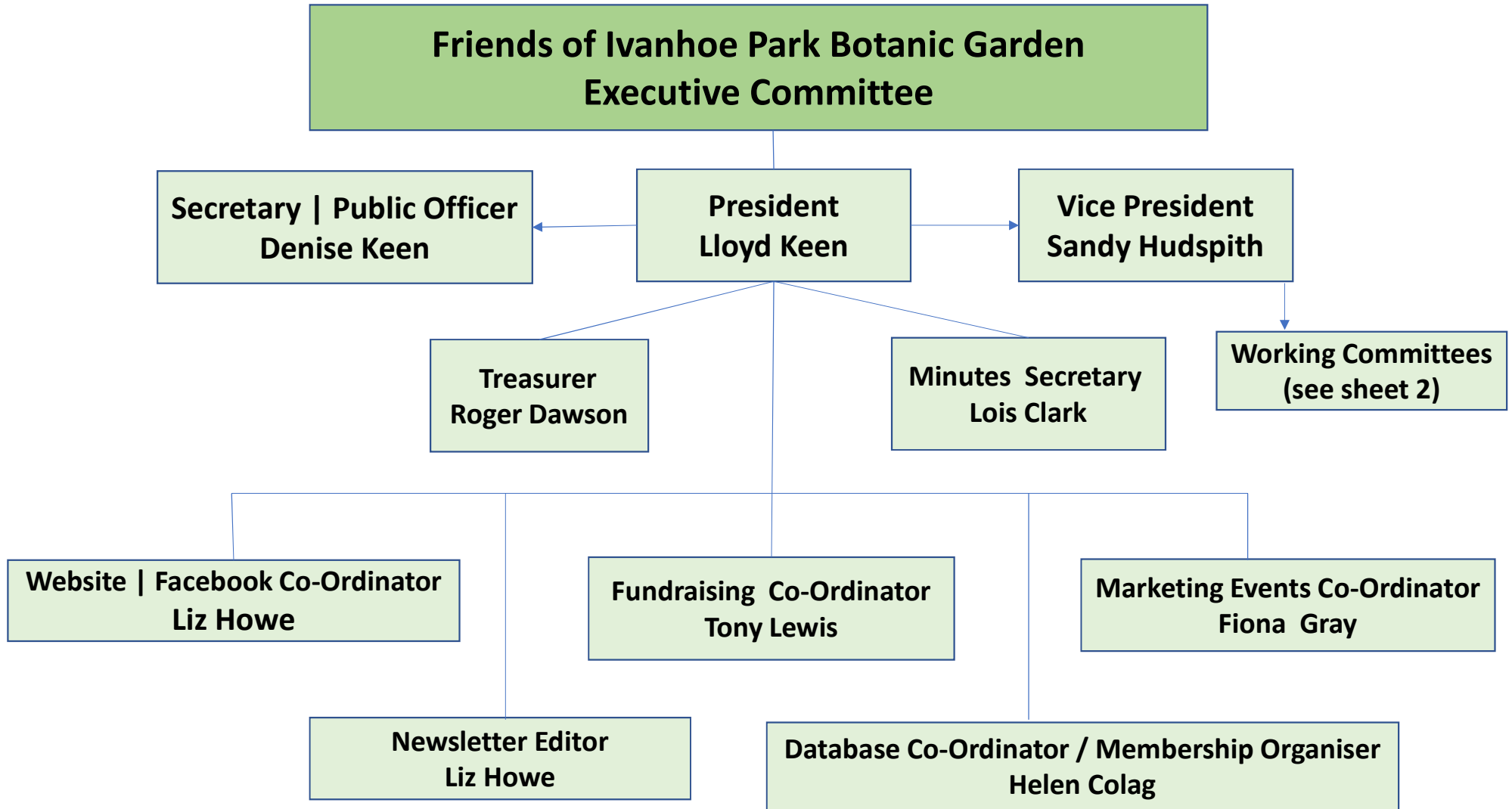
**Website | Facebook Co-Ordinator  
Liz Howe**

**Fundraising Co-Ordinator  
Tony Lewis**

**Marketing Events Co-Ordinator  
Fiona Gray**

**Newsletter Editor  
Liz Howe**

**Database Co-Ordinator / Membership Organiser  
Helen Colag**



# Friends of Ivanhoe Park Botanic Garden

## WORKING GROUP

**Leader - Sandy Hudspith**

**Education Co-Ordinator**

.....

**Fundraising Co-Ordinator**

.....

**Gardening Co-Ordinator**

.....

**Tours/Events/ Activities  
Co-Ordinator**

## Northern Beaches Hospital

A small number of representatives from the Greater Manly Residents Forum together with residents from other local Community Groups recently took part in a tour of the new Northern beaches Hospital.

The tour was organised by our local State member, James Griffin who was keen to demonstrate that the hospital will cater for all community needs.

The building is very attractive internally with widespread use of maple wood and light and modern colours with subtle use of murals.

What was impressive was the amount of natural light that filtered into most areas of the hospital making for a warm environment.

It was pleasing to learn the hospital has been designed to be added to when needed. However, this will be some years off as the size of the facilities has been created using visitor records from Manly & Mone Vale hospitals over recent years, ensuring the hospital will cater for the community needs for many years

It has the second highest rating hospital, a grade 5, which effectively means it can cater for all types of medical procedures.

The hospital is designed with an emphasis on public needs with 60% for this sector and 40% for private.

Unlike older hospitals the public wards and rooms are on par with the private rooms. There is maximum of two beds per room and each is well equipped with it an en-suite.

There are many single bed rooms

Many patients will also have some lovely views to enjoy.

The Emergency sector is designed to quickly process and treat patients. One important element is that each incoming patient will see a senior doctor who will determine if the patient needs to be admitted to the emergency ward.

Given that 40% of visitors to the emergency department don't need to be admitted to the hospital this is a very important step to free up beds and fast track patients.

Mental Health occupies a complete level and has been designed to provide a pleasant ambience without the feel of any lock-up areas. Patients have plenty of space to relax in and their own eating areas.

The onus has been to provide the best possible environment for anyone suffering from a Mental Health issue.

The surgery areas feature the latest state of the art equipment allowing for all types of operations to take place at the hospital.

The maternity and birthing suites are state of the art and provide an extremely comfortable and safe environment for families to welcome their special new borns.

As we made our way through the hospital we were very impressed by the design and lay-out and we felt reassured that his excellent new facility will cater for the communities hospital needs for the years to come.

Author: Gary O'Brien.